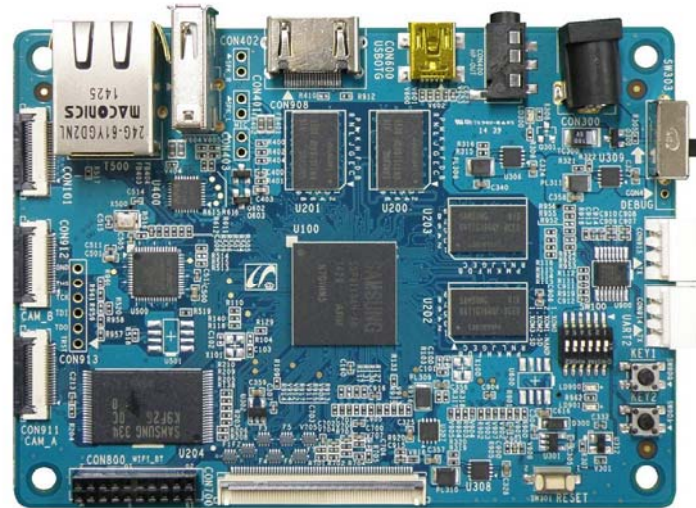


Quick Start Guide



Mango210



About the Mango 210

삼성 1GHz 고성능 Cortex-A8 Application Processor 탑재 개발 보드

- Samsung S5PV210 (Cortex-A8 Application Processor) Development Board
- Input Voltage 5V
- Memory Mobile DDR2 512 Mbytes
- Android, Linux, Wince 지원
- USB Host, USB Device, 10/100 Mbps Ethernet, microSD socket, Audio Codec 기본 지원
- WIFI/Bluetooth, 각종 TFT LCD, 각종 Sensor (가속도, 자이로, 기압, 리모콘 등), Camera 인터페이스 확장 지원



CRZ TECHNOLOGY

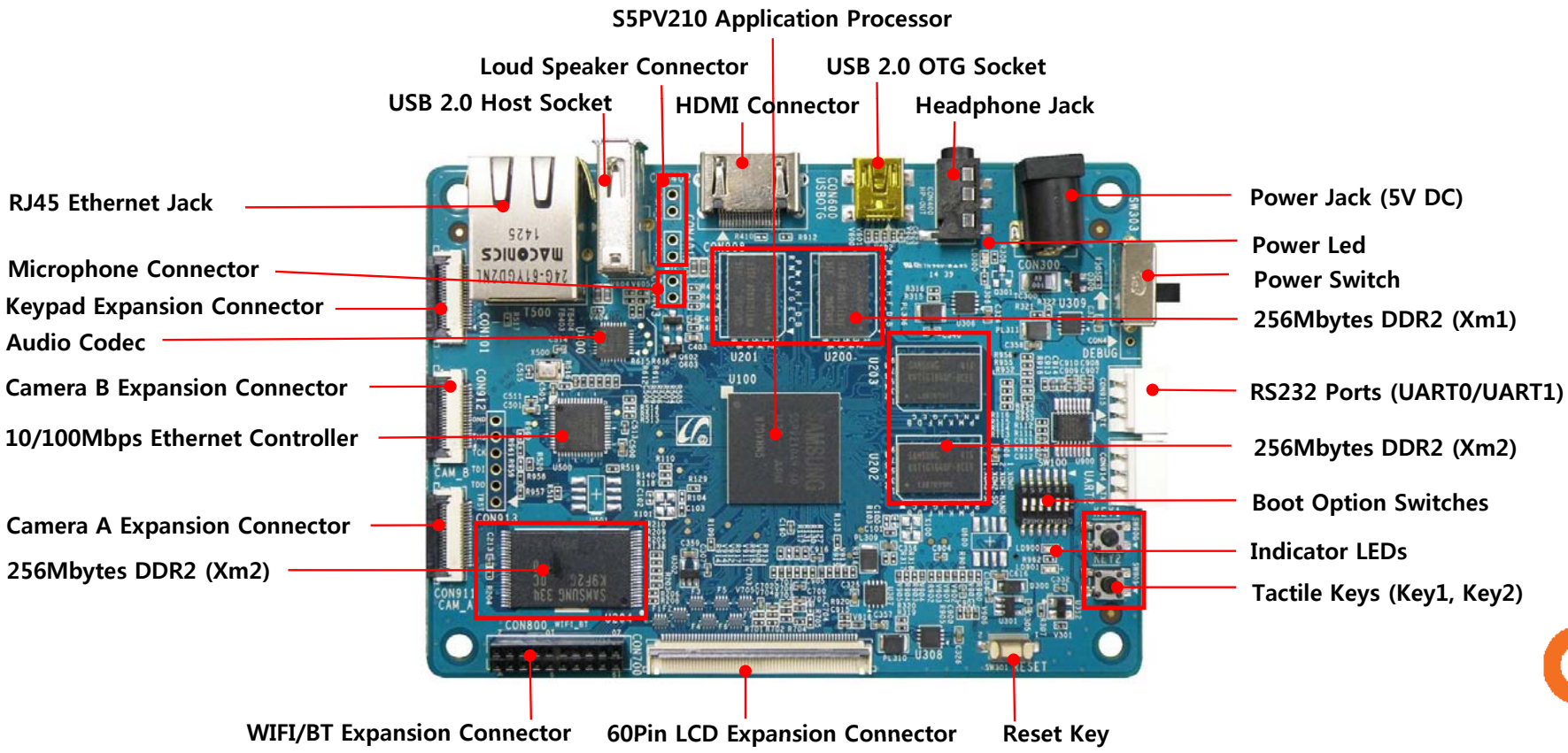
Getting Started

- ❖ Boards : Mango210 Main Board, CM usb to RS232 module
- ❖ Cables : mini-usb Cable 2ea, 3pin Serial
- ❖ Power Supply : 5V /2A adapter
- ❖ Documentation : Quick Start Guide (this document)



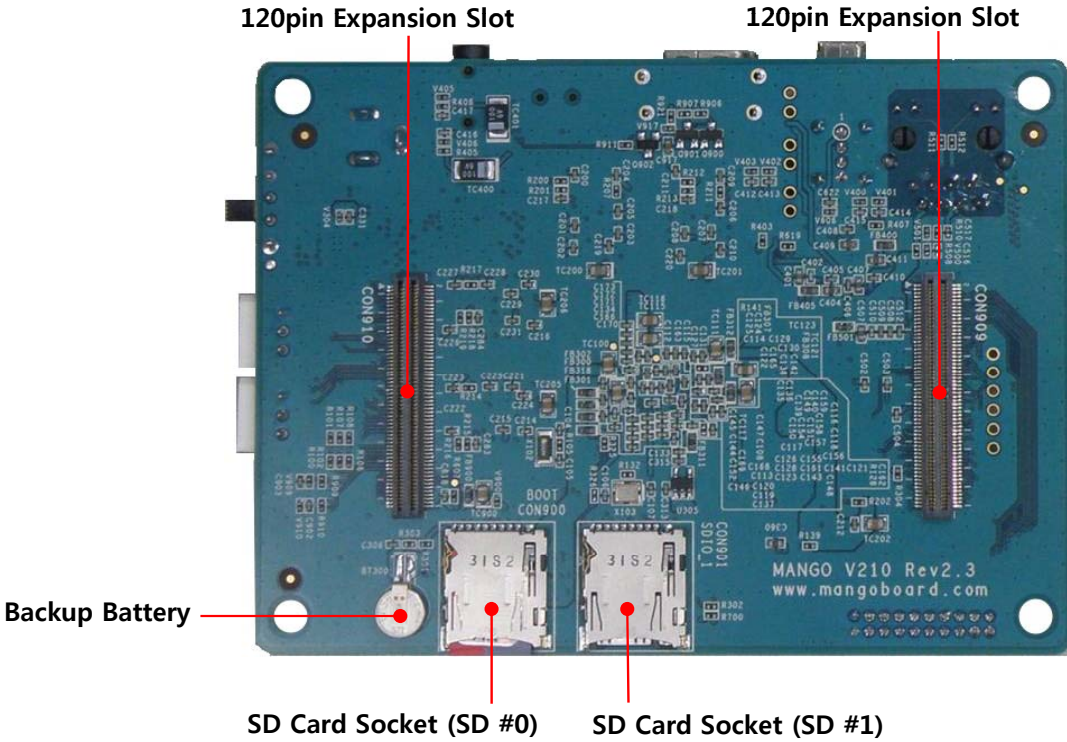
CRZ TECHNOLOGY

Get to Know the Mango210 TOP



CRZ TECHNOLOGY

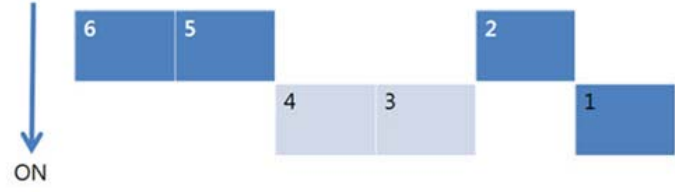
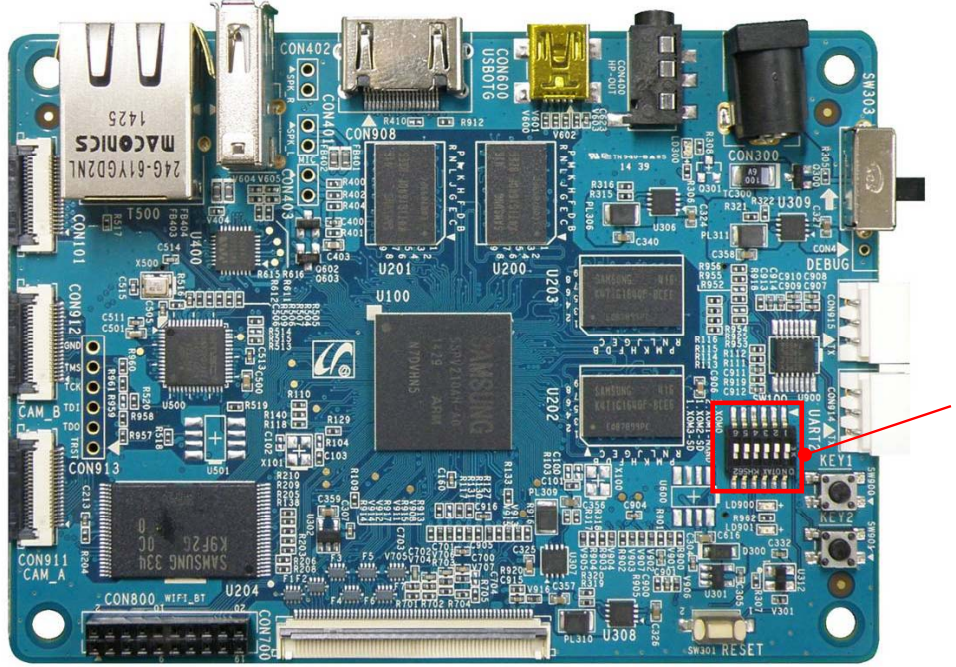
Get to Know the Mango210 Bottom



CRZ TECHNOLOGY

Setting up the Board

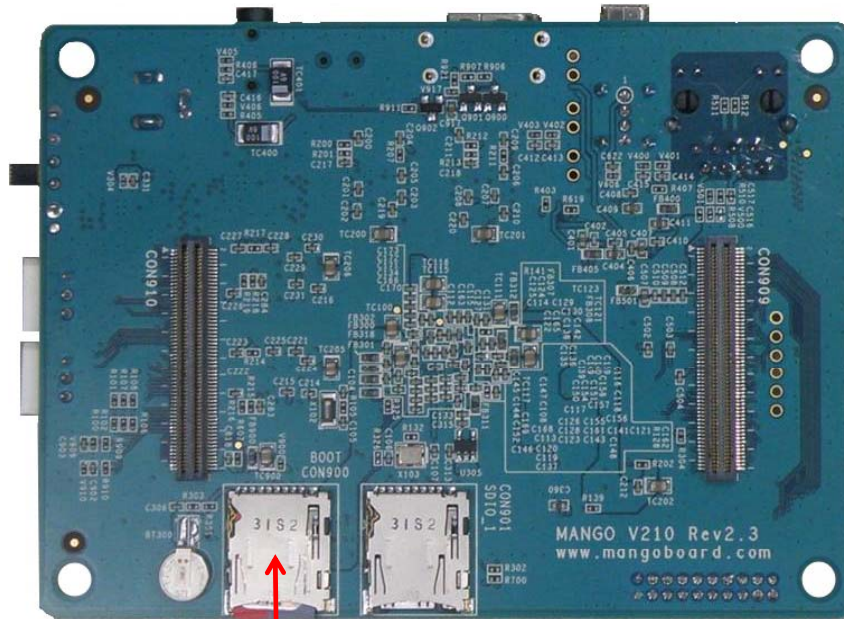
1 SD/MMC Boot Mode 스위치 설정



ORZ TECHNOLOGY

Setting up the Board

2 SD카드 삽입



SD Card Socket (SD #0)에 SD카드를 삽입합니다.



ORZ TECHNOLOGY

Setting up the Board

3

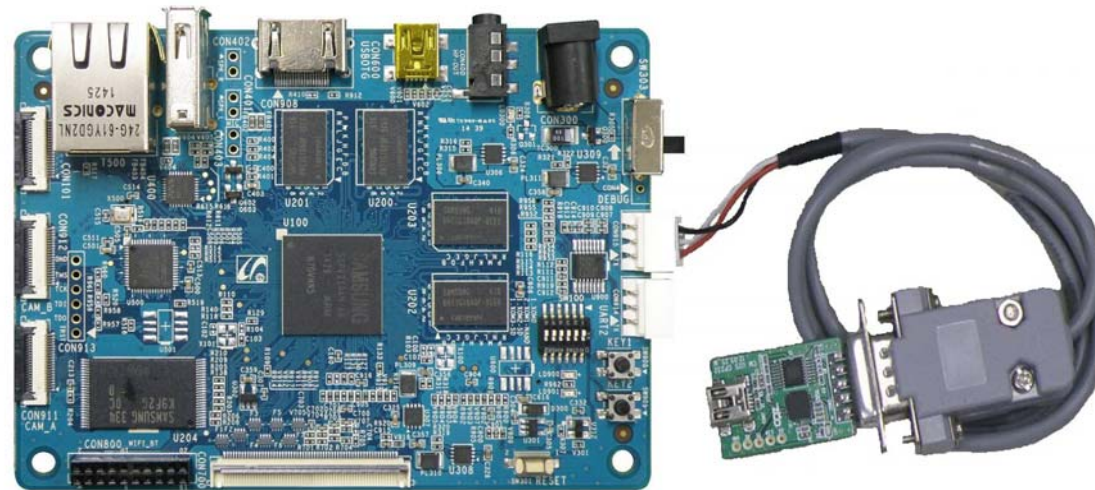
Power 연결

5V/2A 어댑터를 Mango210 보드에 연결합니다. 전원이 정상적으로 연결되면 Power LED가 켜집니다.

4

3Pin RS232 보드 연결

아래와 같이 Mango210 보드의 RS232 커넥터에 RS232모듈을 장착하여 컴퓨터에 연결한 후 Reset 스위치를 누릅니다.



QRZ TECHNOLOGY

Setting up the Board

5 디버깅 메시지 확인

터미널 프로그램을 연결하여 다음과 같은 디버깅 메시지를 확인하면 정상동작을 하는 것입니다.

```
U-Boot 1.3.4 (Aug 1 2014 - 11:44:36) for MANGO210

CPU: S5PV210@1000MHz(OK)
      APLL = 1000MHz, HclkMsys = 200MHz, PclkMsys = 100MHz
      MPLL = 667MHz, EPLL = 80MHz
           HclkDsys = 166MHz, PclkDsys = 83MHz
           HclkPsys = 133MHz, PclkPsys = 66MHz
           SCLKA2M  = 200MHz

Serial = CLKUART
Board:  MANGO210
```

부팅 시작 시 로그

```
[ 26.593969] acc_open
[ 26.594011] acc_release
root@android:/ #
```

부팅 완료 시 로그

소스 <http://crztech.iptime.org:8080/Release/mango210/>

참조바랍니다.



CRZ TECHNOLOGY



For more information , visit
<http://www.mangoboard.com>
<http://cafe.naver.com/embeddedcrazyboys>